

Ewha,  
Where Change Begins



# Graduate School of International Studies



EWHA WOMANS UNIVERSITY

**Graduate School of International Studies**

52, Ewhayeodae-gil, Seodaemun-gu, Seoul, 120-750, Korea  
Tel: +82-2-3277-3652, 3956 Fax: +82-2-365-0942  
E-mail: [gsis97@ewha.ac.kr](mailto:gsis97@ewha.ac.kr) Website: <http://gsis.ewha.ac.kr>



EWHA WOMANS UNIVERSITY  
THE GRADUATE SCHOOL OF INTERNATIONAL STUDIES



### About Ewha GSIS

Ewha GSIS [Graduate School of International Studies] was established in 1997 with policy support from the government. It has been ranked overall the best GSIS in Korea by the Ministry of Education, ranked second in terms of number of graduates employed by international organizations, and is the only GSIS in Korea to be accredited by ISA (International Studies Association). Many graduates who concentrated in International Studies and Korean Studies have become active players in the global arena.

# Graduate School of International Studies

## Table of Contents

### • Welcome to Ewha GSIS

- Greetings from the Dean 4
- Ewha, Where Change Begins 5

### • Introduction to GSIS

- Why is Ewha GSIS the Best? 6
- Faculty 8
  - Department of International Studies
  - Department of Korean Studies
- Academic Programs 16
- Curriculum 18
  - Department of International Studies
  - Department of Korean Studies
- Becoming a Part of Ewha GSIS 23
  - Admissions
  - Tuition & Scholarships
- Academic Activities 24
  - Distinguished Global Lecture Series
  - Special Lecture
  - Oceania Workshop
- Research Institutions 26
  - Institute for International Trade and Cooperation
  - International Studies Review
  - Institute for Development and Human Security
- Special Programs 28
  - Ewha-KOICA Master's Program in International Studies (Women and Development)
  - World Class University Program
  - Ewha-Harvard Summer School Program
  - Ewha-KF Global E-School
- Outreach 30
  - Dual Degree Program
  - Non-degree Exchange Program

### • We are Ewha GSIS

- Diversity of Students 32
  - Nationality of Students
  - Educational Background of Students
- Student Activities 33
  - International Cultural Festival
  - Student Council Activities
  - Spring and Fall Field Trips
  - Study Groups
- Essays from Students 34
  - Department of International Studies
  - Department of Korean Studies
- Internships & Career Opportunities 36
- GSIS Moments 38
- Facilities 40
- Campus Map 42

Greetings from the Dean

Ewha GSIS was established in 1997 to train women to become global leaders in the global arena in the fields of international trade & investment, international business, development cooperation and international relations. Ewha GSIS was ranked number one in the country by the Ministry of Education of the Republic of Korea (1997-2000), and has produced professionals in various international fields around the world. In 2006, the Korean Studies joined the GSIS with two majors: Korean culture and teaching Korean as a foreign language.



Ewha GSIS has world-renown faculty members from Asia, North America, and Europe, and it has become a leading educational institution for aspiring women leaders. Ewha GSIS has many special programs and research centers that attract outstanding students from around the world.

The Institute for Development and Human Security received the World Class University research grant and brought two distinguished scholars from the US -- Professor Barbara Stallings from Brown University, and Professor Jae-Jung Suh of Johns Hopkins University. The Institute for International Trade & Cooperation has published the International Studies Review, which is a registered journal of the Korea Research Foundation since 2010. The Ewha-KOICA Master's Program offers scholarships to students from over 30 developing countries.

The Korean Studies Department has received a grant for the Global E-School Program from the Korea Foundation to provide on- and off-line education on Korean society and culture. Ewha GSIS is the place for future women leaders, who aspire to change the world for sustainable development and peace. Come join us at Ewha for a better future for all of us on this planet Earth!

Eun Mee Kim, Ph.D.  
Dean and Professor

Ewha, Where Change Begins



Special Lecture by Christopher R. Hill (U.S. Assistant Secretary of State, US Chief Negotiator for the Six-Party Talks) on December 1, 2007



*"The KORUS FTA: A Gigantic Leap Toward Openness and Competition"*  
FTA Special Lecture by Ambassador Kim Jong-hoon (Chief Negotiator for the Korea-US FTA) on May 4, 2007



Special Lecture by Wendy Cutler (Chief Negotiator for the US-ROK FTA Negotiations) on October 16, 2007



Ewha Model G20 FMM and Summit on October 25, 2010



International Symposium "Styles of Foreign Assistance" on May 26-28, 2011



Special Session: Work of UNIFEM by Inés Alberdi, Executive Director, UNIFEM on December 3, 2008

Why is Ewha GSIS the Best?



The Graduate School of International Studies (GSIS) at Ewha Womans University was established in March 1997 to spearhead the effort to produce the finest global leaders for the 21st century. The Korean government awarded Ewha with a five-year grant to establish a GSIS that would provide the intellectual breadth and professional development necessary to successfully launch women into the international arena.

Ewha GSIS has a winning program and a proven track record of producing global leaders. Ewha is the largest women’s university in the world. In addition, the Korean Ministry of Education ranks Ewha GSIS number one out of all Korean GSIS programs.

Ewha GSIS boasts an excellent job placement record for graduates. Current GSIS graduates work in international organizations and embassies including the World Bank, UN Headquarters, WTO, and AMCHAM (American Chamber of Commerce); government and public institutes like the Ministry of Foreign Affairs and Trade, the Ministry of Strategy and Finance, and the National Assembly; domestic research institutes and think tanks including KIEP (Korea Institute for International Economic Policy), KWDI (Korea Women’s Development Institute), and KEDI (Korea Educational Development Institute); and multinational and domestic corporations including IMM Asset Management, IMM Consulting Group, Arthur Anderson, SK Telecom, Korea Herald, KBC, MBN, MBC, and CBS, to name a few.

Ewha GSIS produces top quality leaders because of the program’s commitment to excellence at every level. The comprehensive program begins with in-class lectures and seminars. Students undertake internships at domestic and international organizations and businesses, and take intensive language and computer skill training courses. The advantageously low student-to-faculty ratio allows students to learn international business, politics, trade, development, and security in an intimate environment. The small class size is purposely structured to provide the highest quality of education to the select few candidates chosen for the program. By doing this, each student receives maximum resources and focus of the faculty and department that may be absent from other GSIS programs.

Ewha GSIS is the only school in Korea with a dual M.I.S. degree program in conjunction with the Elliot School, George Washington University (Washington, DC). After completing three semesters at Ewha GSIS and two semesters at the Elliot School, students receive two Master’s Degrees in International Studies.

Ewha GSIS is the hub for training 21st century global leaders and is the strategic choice for women seeking the best education, the most dynamic atmosphere, and the greatest competitive edge any program can offer. In short, Ewha GSIS is the only program of its kind in Korea to offer exceptional leadership opportunities and courses specifically geared for women leaders.



Ewha GSIS is the Best.



Eun Mee Kim

Dean  
Professor/Ph.D., Brown University  
Political Economy, International Development, Industrial Organization, Globalization, Multiculturalism

Eun Mee Kim is Professor and Dean at the Graduate School of International Studies and the Director of the Institute for Development and Human Security (IDHS) at Ewha Womans University (Seoul, Korea). She is President of the Korea Association of International Development and Cooperation, which is an interdisciplinary academic association of development cooperation researchers, experts, and NGOs. She is currently PI on a research grant comparing emerging and traditional donors, and the relationship between human security and development. This research was supported by the WCU (World Class University) program through the National Research Foundation of Korea funded by the Ministry of Education, Science and Technology of the Republic of Korea. Before coming to Ewha, she was Professor in Sociology at the University of Southern California; and Visiting Scholar at Harvard University and Brown University. Research interests include East Asian development; globalization; development cooperation; multiculturalism, and chaebol. Books include *Multicultural Society of Korea* (Nanam Press, 2009, co-authored in Korean); *Corporate Restructuring and Networks in Korea After the Financial Crisis* (Seoul National University Press, 2005, co-authored in Korean); *Big Business, Strong State: Collusion and Conflict in South Korean Development, 1960-1990* (State University of New York Press, 1997); and an edited book, *The Four Asian Tigers: Economic Development and the Global Political Economy Development* (Academic Press, 1998). She has been a member and also served in various positions at the American Sociological Association, International Sociological Association, and Association for Asian Studies; and is currently the Vice President and founding member of the Korean Association of International Development Cooperation. She serves on the Committee for International Development Cooperation under the Prime Minister's Office.

Kisuk Cho

Professor/Ph.D., Indiana University  
American Politics, International Public Relations, Negotiation and Leadership, Women's Studies

Professor Cho is a political scientist educated at Ewha (B.A.) and Indiana University (Ph.D.). She has studied the role of 'trust and social capital' in the field of International Conflict Resolution, International Public Relations, Global Leadership, and Democratic Governance.

She has delivered a keynote speech at the International Leadership Association and published numerous books and articles including "Do Women Lead Differently?", "A Global Leadership Model and Its Empirical Applicability," and "Measurement Gap between Survey and Experimentation of Trust." She is also a co-editor of Encyclopedia of Leadership and the former editor of International Studies Review.

She is a certified trainer of leadership development and negotiation workshop. She has served for the Korean Political Science Review as an editor and for President Roh Moo-Hyun of the Republic of Korea as a senior secretary in public relations. She is currently the director of the Institute for International Trade and Cooperation and leading one of the Ewha Global Top 5 research teams on "Social Capital, Democratic Governance, and Corporate Social Responsibility."

Youngjeen Cho

Assistant Professor/S.J.D., Harvard Law School  
International Trade Law, Trade Negotiations, Trade and Development

Professor Cho is a lawyer whose interests include international trade law, trade negotiations, and trade and development. She went to Seoul National University, receiving a B.A. in law. She also received L.L.M. and S.J.D. degrees from Harvard Law School in 2006. She worked for the Ministry of Foreign Affairs and Trade for three years before she joined Ewha in 2008.

Byung-il Choi

Professor/Ph.D., Yale University  
Negotiations and Conflict Resolution, Trade Policy, International Economics, Political Economy of Development, Information and Communication Technology Policy

Byung-il Choi is an economist trained at Seoul National University (B.A.) and Yale University (M.A., Ph.D.). Prior to joining the GSIS in 1997 as a founding faculty, Dr. Choi was a trade negotiator representing the Korean government. He started his negotiating career at the Korea-US telecommunication talks (1990-1992). Dr. Choi was the Korean chief negotiator for the historic WTO basic telecom negotiations (1994-1997), and played a key role in making the agreement. Professor Choi has researched on international trade, corporate policy, trade and development, and conflict resolution. His book, *The Success and Failure of Trade Negotiations of Korea* (2004), earned him the Korean Academy of Arts and Sciences Award. His book, *The KORUS FTA: Against the All Odds* (in Korean, 2006) was a national best-seller. He has served in many governmental committees, as the President of the Korean Association Negotiation Studies, and advised major Korean companies. He is now the president of the Free Trade Academia.

Brendan M. Howe

Department Chair  
Associate Professor/Ph.D., University of Dublin, Trinity College  
International Politics, International Security, International Organization, International Negotiation, International Norms, Decision-Making

Brendan Howe is an international theorist from the Southwest of England, trained at Oxford University (B.A./M.A. Modern History); the University of Kent at Canterbury (M.A. International Conflict Analysis); the University of Dublin, Trinity College (Ph.D. Political Science).

Professor Howe joined GSIS in 2001 and lectures primarily on international security, international relations, international negotiations, human rights, and human security. Previous posts include Visiting Professor at Beijing Foreign Studies University, and lecturer at University Malaysia Sarawak. His research leave (2007-2008) took him to Korea National Defense University and the University of Sydney, and he has also held visiting fellowships at Georgetown, the East-West Center, and De La Salle University. He has published extensively in the fields of Northeast Asian security, foreign policy decision-making, human security and development, and humanitarian intervention. He is a Director of the Asian Political and International Studies Association (APISA), the Associate Director of the Institute for Development and Human Security, Editor of the International Studies Review, and a Member of the International Institute for Security Studies (IISS). He is currently conducting a major research project on human security in East Asia funded by the National Research Foundation.

Thomas Kalinowski

Assistant Professor/Ph.D., Freie Universitaet Berlin  
International Political Economy, International Development, International Organizations, Comparative Political Economy

Thomas Kalinowski studied political science at Philipps Universitaet Marburg and Freie Universitaet Berlin. He received his Ph.D. from Freie Universitaet Berlin in 2004. Since graduation, he has been a visiting fellow at the East West Center Hawaii, a lecturer at Humboldt University Berlin, a postdoctoral fellow at the University of California in Berkeley, and a visiting assistant professor at Brown University.

He joined the Ewha GSIS faculty in 2007. Professor Kalinowski is teaching international political economy, international organizations, development theory and practice, international finance, sustainable development, political economy of East Asia, European integration, and comparative political economy. Recent publications include works on the Asian financial crisis, the global economic and financial crisis since 2008, international financial regulation, the IMF, the G20, monetary cooperation in Europe and East Asia, financial liberalization and bank reform in Korea, the future of the developmental state and the diversity of capitalism. Currently he is working on a book about the G20 and the problems of regulating international finance.



Jasper S. Kim

**Jasper S. Kim**

Professor/J.D., Rutgers University, School of Law  
International Negotiations, International Business Law, International Finance

Jasper Kim is a U.S. attorney with previous experience as both a lawyer and banker for Lehman Brothers, Barclays Capital, and Credit Suisse. He is a Visiting Scholar at Harvard University, who has also attended the London School of Economics. He has also served as invited faculty for the Supreme Court of Korea's Judicial Research and Training Institute.

His books include, *ABA Fundamentals: International Economic Systems*, *24 Hours with 24 Lawyers: Profiles of Traditional and Non-Traditional Careers*; *Korean Business Law: The Legal Landscape and Beyond*; and *Crisis and Change: South Korea in a Post-1997 New Era*. And he has been featured in *The Wall Street Journal*, BBC TV, CNBC TV, National Public Radio (NPR), *Bloomberg News International Herald Tribune (IHT)*, and *The New York Times*.



Jiyoung Kim

**Jiyoung Kim**

Ewha-KOICA Program Professor/Ph.D., University of California, Irvine  
International Development Cooperation, Globalization, International Political Economy, East Asian Political Economy

Jiyoung Kim is a political scientist who specializes in international development cooperation, international political economy, and globalization. After completing her B.A. in Political Science at Ewha Womans University, she received her M.A. in International Studies at Ewha GSIS and Ph.D. in Political Science at University of California, Irvine. Broadly trained in the field of international relations and comparative politics, she is the author of various journal articles and books. Her recent publications include "South Korea's Democratization Movement in 1980-1987: Political Structure, Political Opportunity, and Framing" (co-authored, 2012) in *Modern Asian Studies* and "Foreign Aid and Economic Development: The Success Story of South Korea" (2011) in *Pacific Focus*. Her current research focuses on politics of foreign assistance and comparative historical analysis of economic development and foreign assistance in Africa and Asia. Before joining Ewha GSIS, she taught at University of Northern Colorado (Department of Political Science).



Inpyo Lee

**Inpyo Lee**

Professor/Ph.D., Yale University  
Macroeconomics, Money and Banking, International Finance, Korean Economy, Economic Education

Inpyo Lee is an economist whose research has included theoretical and empirical macroeconomics, international finance, analysis of financial and fiscal policies in Korea, and economic education. He is the author of *A Flow-of-Funds Financial Model of Korea* (1995), *Global Taxation of Financial Income: Effects and Policy Implications* (1996), and numerous articles on a wide range of topics. Trained at Seoul National University (B.A., M.A.) and Yale University (Ph.M., Ph.D.), Professor Lee was a research fellow at the Korea Institute of Public Finance before he joined Ewha.



Eun Mie Lim

**Eun Mie Lim**

Ewha-KOICA Program Director/Ph.D., University of Washington  
Economic Sociology, International Development, Gender and Development  
East Asian Economic Development, Research Methodology

Eun Mie Lim is an economic sociologist who specializes in international development, ODA, gender and development, and East Asian economic development. She received her B.A. in political science from Ewha Womans University and Master's and Doctorate degrees in sociology from the University of Washington. She has comprehensive training in theoretical and empirical studies of developing countries. Her recent research includes foreign aid and Korea's development, ODA management and structures, evaluation of gender mainstreaming in Korea's development cooperation, ODA budget and implementation system of Korea, and aid effectiveness for higher education of women.

**Young-sook Nam**

Associate Professor/Ph.D., Stanford University  
International Development, Development Economics, Trade Negotiations, Chinese Economy, Education and Labor Policy

Professor Nam is an economist with extensive experience with international and national policymaking institutions. She received both her Ph.D. in International Development and M.A. in Economics from Stanford University, M.S. in Comparative and International Education from Indiana University, and B.A. in Economics from Korea University. She worked as an international civil servant for the OECD in Paris and for International Labor Organization (ILO) in Geneva.

After returning to Korea, she served as Deputy Director-General at the Ministry of Foreign Affairs and Trade where she played a leading role in a number of Korea's FTA negotiations. As chief negotiator, she led the successful conclusion of the Korea-Thailand FTA in 2007. She was also one of the lead negotiators for Korea's FTA talks with the U.S., the EU, ASEAN, India, and Mexico. Her other previous posts include the Head of the China Research Team at the Korea Institute of International Economic Policy (KIEP) and Director at the Ministry of Information and Communication. She has published a number of books and articles, some of which include *Reforming China's Enterprises* (2000) and *Economic Effects of Korea-China FTA and the Main Issues* (2004).



Young-sook Nam

**Jennifer Sejin Oh**

Full-time lecturer/Ph.D., Princeton University  
East Asian Politics, Comparative Political Economy, International Trade

Jennifer Oh is a political scientist who specializes in comparative political economy and East Asian politics. She has extensive research experience in international institutions, trade and liberalization, market reforms, political-economic systems, state-society relations, and development. In 2007, she coauthored an article in *Comparative Politics* titled "Repeal of the Rice Laws in Japan: the Role of International Pressure to Overcome Vested Interests." After completing her B.A. degree [Political Science] at the University of California at Berkeley, she received her Doctorate and Master's degrees [Politics] from Princeton University in 2009. Her current research examines the politics of sensitive market reforms in advanced industrialized countries.



Jennifer Sejin Oh

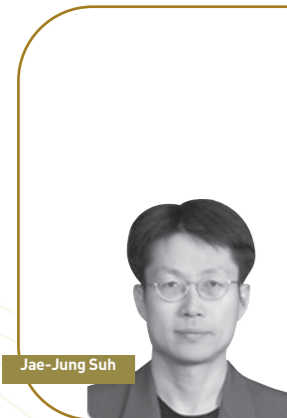
**Barbara Stallings**

Distinguished Professor/ Ph.D. University of Cambridge and Ph.D. Stanford University  
Watson Institute  
Brown University  
Economic Reform and Development, Latin America and East Asia, Finance for Development, Development Strategy, International Political Economy

Barbara Stallings, the William R. Rhodes Research Professor at Brown University, is an expert of political economy analysis with extensive experience at international organizations including the UN Economic Commission for Latin America and Caribbean and IMF. She received Ph.D. from the University of Cambridge in Economics and second Ph.D. from Stanford University in Political Science. She was former Director of Watson Institute for International Studies, Brown University and established Global Studies Research Program at the University of Wisconsin-Madison as the founding Director. She has published extensively on economic reform and development of Latin America and East Asia, finance for development and development strategy from political economy perspective.



Barbara Stallings



Jae-Jung Suh

**Jae-Jung Suh**

Distinguished Professor/ Ph.D. University of Pennsylvania  
Director of Korean Studies Program, Johns Hopkins University Paul H. Nitze School of Advanced International Studies  
South Korea, North Korea, East Asia, Human Security, Military Balance, Security Policies, Weapons of Mass Destruction

J.J. Suh is currently Distinguished Professor at the Graduate School of International Studies, Ewha Womans University and Associate Professor and Director of the Korea Studies Program at SAIS, Johns Hopkins University. He has previously served as Assistant Professor in Department of Government at Cornell University and on the Presidential Commission on Policy Planning (Republic of Korea). An expert on the U.S.-Korea relations, U.S. policy toward Asia, international relations of East Asia, international security, and IR theory, he is currently working on regional orders in East Asia, human security, and North Korea. He has authored and edited numerous journal articles and books, including *Power, Interest and Identity in Military Alliances* (2007); *Rethinking Security in East Asia: Identity, Power and Efficiency*, co-editor (2004); "The Imbalance of Power, the Balance of Asymmetric Terror: Mutual Assured Destruction (MAD) in Korea," "The Two-Wars Doctrine and the Regional Arms Race: Contradictions in U.S. Post-Cold War Security Policy in Northeast Asia," and "War-Like History or Diplomatic History? Historical Contentions and Regional Order in East Asia." He received his Ph.D. and Master in political science from University of Pennsylvania and B.A. in physics from the University of Chicago.



Heather Willoughby

**Heather Willoughby**

Assistant Professor/Ph.D., Columbia University  
East Asian Culture and Society, Anthropology, Cultural Studies, Korean Traditional and Popular Culture and Music

Heather Willoughby is an ethnomusicologist specializing in the study of traditional Korean music, culture and society. She received her Master's and Doctorate degrees from Columbia University. In addition to her major studies, she has comprehensive training in social and cultural anthropology and Korean Studies, with broad interests in East Asian history, society, culture, religion as well as Women's Studies. She has written numerous articles on Korean traditional and popular music and is currently preparing a book manuscript on emotional expression in Korean traditional music. At Ewha professor Willoughby teaches a broad array of courses including Cross-Cultural Communications, Korean History and Culture, Women and Human Rights, Global Business Culture and Etiquette, and Women and Music.



Jang-Hee Yoo

**Jang-Hee Yoo**

Professor Emeritus/Ph.D., Texas A&M University  
Macroeconomics, Regional Cooperation, International Organizations

Jang-Hee Yoo is an economist and a former President of the Korea Institute for International Economic Policy (KIEP). He is also a former President of the Korea-America Economic Association and a former President of the Korean Economic Association. He was trained at Seoul National University (B.A), UCLA (M.A.) and Texas A&M University (Ph.D.). Before joining Ewha, he taught at Clark University in Massachusetts, Virginia Commonwealth University, and Seoul National University. He authored numerous books and articles. He was decorated with a National Medal of Honor by the Korean government for his distinguished service in international policy-making. He is the former Dean of GSIS, and served as a vice president of Ewha Womans University until 2006. He is currently a professor Emeritus of Ewha Womans University and a member of the National Academy of Sciences.



Jean S. Kang

■ **Adjunct Professors**

**Jean S. Kang**

Associate Professor /Ph.D., Harvard University  
International Relations, International Political Economy, International Peace and Security

Jean S. Kang received her degrees from Wellesley College (B.A.) and Harvard University (A.M., Ph.D.). She is a diplomatic historian with a regional focus on contemporary China. Her research interests include modern U.S.-China relations, comparative East Asian regional politics, and U.S. foreign policy. Recent publications include articles examining U.S. foreign policy for China and comparative work on the PRC and North Korea. She joined the faculty of GSIS/DIS in the spring of 2002. At GSIS/DIS she teaches courses on International Relations, International Political Economy, International Peace and Security at both the graduate and undergraduate level.

**Seok Weon Lee**

Associate Professor/Ph.D., University of Texas at Dallas  
Financial Management, Investment Management, Corporate Finance, Risk Management

Professor Lee received his B.A. degree from the Yonsei University (Economics) and Ph.D. degree from the University of Texas at Dallas (Finance). His previous careers include a senior economist at the KDIC (Korea Deposit Insurance Corporation) and a fund professor at Yonsei Business school. Right before joining to Ewha, he was an assistant professor at the department of finance and insurance, Soonchunhyang University. He is interested in various areas in finance and has published numerous articles in leading international journals. He has taught financial management, investment management, corporate finance and international finance, and so forth.



Seok Weon Lee

**Jai S. Mah**

Professor/Ph.D., Brown University  
Economic Development, International Economics

Professor Mah received Ph.D. in Economics at Brown University. He was a Professor at Dankook University (1988-2004) and an economist at the World Trade Organization (1995-1996) and the Ministry of Foreign Affairs and Trade (1998-1999). He also worked as a consultant at the World Bank. He has numerous publications in international referred journals including the World Economy, Journal of Economic Issues, Applied Economics, Journal of World Trade, and Post-Communist Economies.

His research interests relate to the role of globalization in economic development of developing countries, east and southeast Asian economies, and international economic policy.



Jai S. Mah

**Ihn-Hwi Park**

Associate Professor/Ph.D., Northwestern University  
International Security, East Asian security, Korea-US Relations, US foreign policy, Cold War History

Professor Park's area of expertise lies in the fields of international political theory, security studies, U.S. foreign policy, Northeast Asian security, and the Cold War history. He was a Research Professor of Asiatic Research Center at Korea University (2001-02), a Senior Researcher of the Institute for National Management & Strategy at Sungkyunkwan University (2002-03), and also has been a Non-resident Research Fellow for Korea-US Exchange Council (2001-04). Dr. Park has written articles on international relations and East Asia in journals including *Korea Political Science Review*, *the Korean Journal of International Relations*, *Strategic Studies*, *Korea and World Politics*, *Global Economic Review*, *Sino-Soviet Affairs*, *Journal of Korean Political and Diplomatic History*, and *International Studies Review*. He serves on the editorial board of Korean Journal of International Relations. Prof. Park receives his Ph.D. from Northwestern University in 1999.



Ihn-Hwi Park

**Wonseok Woo**

Associate Professor/Ph.D., State University of New York at Buffalo  
Strategy Management, International Business

Professor Woo is trained as a management scholar in the fields of Strategic Management and International Business. His main research area is corporate strategy, especially mergers & acquisitions and diversification as well as international business and entrepreneurship issues. He was an assistant professor for two and half years at Alfred University in Western New York, where he was in charge of MBA and undergraduate-level strategy and entrepreneurship courses. He did his Ph.D. degree at State University of New York at Buffalo. He received his MBA degree from Carnegie-Mellon University. He also had work experience at Bankers Trust Company (now Deutsche Bank) in the International Finance Department and Hana Bank's Korea Investment Research Institute as a financial analyst. He graduated from Seoul National University in 1987 for his B.S. degree at the School of Management.



Wonseok Woo

**Joon Sik Choi**

Professor/Ph.D., Temple University  
Religious Studies, Korean Studies

Professor Choi is the president of Korean Association for Thanatology and Institute for the Korean Culture and Arts. Professor Choi received his Ph.D. from Temple University on the Study of Religion, and B.A. in history from Sogang University.

His book, *Do Koreans have culture?*, has attained spotlight among the Korean intellectual society. He is conducting a broad scope of research by using various analysis tools and perspectives on Korean culture and arts. Professor Choi has written articles titled "Koreans' view of Life and Death," "On Several Meanings of Ancestral Worship of the Korean Traditional Society." He has authored *Religions and Culture of Korea 1, 2 & 3, Korean Beauty with Its Spontaneity*, and so on.



Joon Sik Choi

**Young Hoon Kim**

Associate Dean & Chair  
Associate Professor/Ph.D., University of Southern California  
Cultural Anthropology, Visual Anthropology, Korean Studies

Professor Kim is a cultural anthropologist. He received his degrees from Yonsei University (B.A.), Indiana University (M.A.) and University of Southern California (Ph.D.). He is the author of *Culture and Image* (2002) and has published articles in the areas of Korean cultural studies, visual studies, and Korean aesthetics.

With unique combination of academic backgrounds of cultural and visual anthropology, he has been carrying out both writing and producing visual works on the various issues of Korean culture. Before joining Ewha, he worked at the Research Institute of Cultural Properties and was responsible for the documentary series on Korean Intangible Cultural Properties from 1997 to 1999. His own film works includes *Vegas Bliss* (1996), *Yong Su Han, A North Korean Defector* (1997), and others.



Young Hoon Kim

**Youngkyu Kim**

Associate Professor/Ph.D., University of Hawai'i at Mānoa  
Korean Applied Linguistics, Second Language Acquisition

Professor Kim is an applied linguist and Second Language Acquisition (SLA) specialist, conducting research in acquisition, instruction, and assessment of Korean and English as a second/foreign language. He received his Ph.D. in Second Language Acquisition from the University of Hawai'i at Mānoa (UHM). Before joining Ewha, he was an Assistant Professor and Acting Director of the Korean Flagship Program at UHM. His research interests include Instructed SLA, input-interaction-output in SLA, SLA and cognitive psychology, task-based language teaching, Korean/English for Academic Purposes, L2 classroom research, L2 vocabulary acquisition, and L2 testing.

His recent single- or co-authored publications appeared in an edited book *Second Language Needs Analysis* (Cambridge University Press, 2005) and in journals including *Korean Language Education*, *Korean Journal of Applied Linguistics*, *Bilingual Research*, *English Teaching*, and *TESOL Quarterly*. He served on the Editorial Advisory Board of *TESOL Quarterly* (2006-2009) and is currently Secretary General of the Applied Linguistics Association of Korea.



Youngkyu Kim

**Haiyoung Lee**

Associate Professor/Ph.D., Ewha Womans University  
Teaching Korean as a Foreign Language, Second Language Acquisition of Korean

Professor Lee is an applied linguist and second language acquisition specialist. Also, she contributes to the development of Korean and teaching Korean language as a member of various academic and governmental organizations. For academic organizations, she serves as a Vice President of the Korean Society of Bilingualism and has been in Editorial Advisory Board of the Association for Korean Linguistics and the Association of Lexicography. For the government, she is currently Advisor and Chair of the Evaluation Committee of Test of Proficiency in Korean (TOPIK) at the Korea Institute of Curriculum & Evaluation.

And she has been working as a research director of diverse projects of the National Institute of the Korean Language at the Ministry of Culture, Sports and Tourism and of the Korea Foundation at the Ministry of Foreign Affairs and Trade.

She is a professional lecturer in training Korean language teachers for the Foundation for SAT II Korean, the Education Foundation for Koreans Abroad, and the National Academy of the Korean Language. Professor Lee's publication includes *Exciting Korean Listening* (basic and intermediate) in English and Japanese, *Speaking Korean for beginners* and *Listening Korean for beginners*.

Her research interests include materials for teaching Korean as a foreign language, teaching of speaking and listening, Korean language acquisition, and multilingual and multicultural education.



Haiyoung Lee

**Sunhee Park**

Assistant Professor /Ph.D., Ewha Womans University  
Teaching Korean as a Foreign Language, Second Language Acquisition of Korean

Professor Park has joined Department of Korean Studies from 2008 Spring semester and has been working on second language acquisition of Korean and teacher training in and out of Korea. She is interested in Korean morphosyntactic acquisition of English speakers. She has a particular interest in L2 acquisition of semantic functions in terms of linguistic variability.

She pursued her research interest in her doctoral dissertation, which was on the acquisition of English learners on semantic functions of Korean demonstratives. She has worked on instruction of syntax and vocabulary, Task-Based Language Teaching, Korean for academic purposes, Korean teacher training, and Korean curricular development in Duke University and University of Hawai'i at Mānoa. She is working as a teacher trainer on these areas in and out of Korea.

Her recent researches are Project works Utilizing Currently Issues for Advanced Korean Class [*Journal of Korean Languages & Literary Research*, Vol. 129, 2006], Incorporating Project Works into Advanced Korean Classes [*Bilingual Research*, Vol. 30, 2006] and Incorrect Oral Usage of "ku" by English (L1) Learners of Korean (L2): Evidence of Overprojection of Semantic Functions from the L1 form "the" (*Korea Speech Research*, Vol. 11, 2007).



Sunhee Park

## ■ Adjunct Professors

**Young Bin Song**

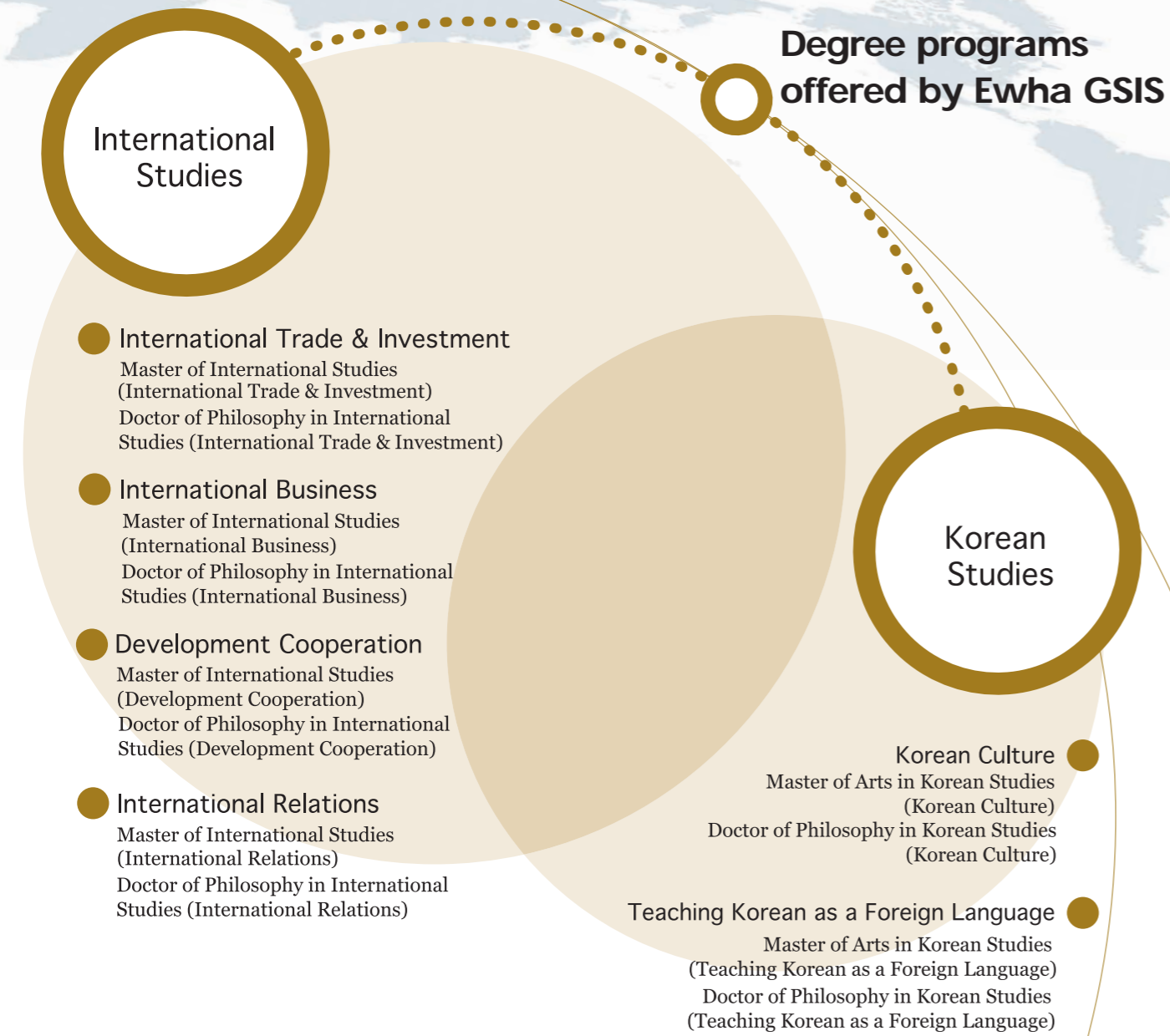
Associate Professor/Ph.D., Nagoya University  
Japanese Language and Culture

Professor Song holds a Bachelor of Arts from the Japanese Department of Hankuk University of Foreign Studies, a Master of Arts from the same school and a Master from Graduate School of Letters, Arts and Sciences, Waseda University. After completing Ph.D. coursework from the same school (Waseda University), he received a Ph.D. from the Graduate School of Letters of Nagoya University.

After working as a Korterm researcher in KAIST, he is now the head of the major in the Japanese Language and Culture at Ewha Womans University.



Young Bin Song



■ International Studies Department

**INTERNATIONAL TRADE & INVESTMENT**

International Trade & Investment concentration is designed to meet the growing need for international trade specialists in Korea and abroad. This program studies the theory, formulation, and history of international trade and negotiation. Also, students are expected to develop a broad understanding of how economic, business, and political factors interact in shaping the international trade environment.

**INTERNATIONAL BUSINESS**

International Business concentration is designed for students who wish to pursue internationally oriented careers in various kinds of private and public sectors dealing primarily with international business and management. This program offers special expertise in international business, finance, and management.

**DEVELOPMENT COOPERATION**

Development Cooperation concentration prepares students for future work in various multilateral and bilateral international organizations with a special emphasis on international development. Through an interdisciplinary array of courses in economic development, democracy, and international development cooperation in developing countries, students in this major acquire a broader understanding of the processes of economic, political, and social change and development in the developing world.

**INTERNATIONAL RELATIONS**

International Relations concentration aims to train students to better cope with the ever-changing dynamics of international affairs. This concentration is designed for students interested in defense policy, diplomatic relations, and international conflict. Students in this program are trained to have expertise in analyzing various kinds of functional and security issues in the international arena.

■ Korean Studies Department

**KOREAN CULTURE**

Through various research methodologies and with an interdisciplinary approach combining anthropological, theological and other perspectives, the Korean Culture program pursues a many-sided study of Korean society, culture, socio-psychological structure, and values. The program also aims to cultivate cultural analysis skills and suggests new perspectives regarding elements of Korean culture such as religions, folkways, history, and the arts.

**TEACHING KOREAN AS A FOREIGN LANGUAGE**

With recognition that Teaching Korean as a Foreign Language (TKFL) is one dynamic subfield of Applied Linguistics, both the M.A. and Ph.D. programs in TKFL have prepared a systematic and comprehensive curriculum that specializes in the acquisition, analysis, pedagogy, and use of Korean as a foreign language. The M.A. program provides both pre- and in-service professional training in TKFL to produce competent and knowledgeable teachers of TKFL to teach and conduct research at TKFL institutions both domestic and abroad. The Ph.D. program in TKFL recruits and trains a critical mass of Korean applied linguists, who will become thoroughly familiar with theory and research in such areas of specialization as Korean Second Language Acquisition and Korean for Specific Purposes and capable of conducting independent and in-depth research in issues of TKFL.

■ Department of International Studies

Master of International Studies

Classification	Courses				Credits
1. Required Courses	IS202 Quantitative Analysis (ITI/IB major only) IS203 Research Methods and Fieldwork (DC/IR major only)				3
2. Professional Training Courses	IS301 Distinguished Global Lecture Series (Two semesters: 1credit/ semester)				2
	IS302 Short-term Internship (One during Vacation)				1
	IS308 Practicum in Korea Society and Culture (Ewha-KOICA program)				1
	IS311 Academic Writing and Presentation				1
	IS312 Professional Leadership Workshop				1
Functional Concentration	International Trade & Investment (ITI)	International Business (IB)	Development Cooperation (DC)	International Relations (IR)	Minimum 15
3. Concentration Requirements	IS401 International Economic Relations	IS404 International Business Management and Strategy	IS309 Practicum in Women and Development (Ewha-KOICA program) IS410 Development Cooperation: Theory and Practice	IS408 International Relations: Theory and Practice	3
4. Concentration Electives	IS201 International Negotiations and Strategy: Theory and Practice	IS201 International Negotiations and Strategy: Theory and Practice	IS201 International Negotiations and Strategy: Theory and Practice IS401 International Economic Relations	IS201 International Negotiations and Strategy: Theory and Practice IS401 International Economic Relations	12
	IS403 International Trade Policy	IS401 International Economic Relations	IS403 International Trade Policy IS407 Global Political Economy IS503 Korean Economy	IS407 Global Political Economy IS503 Korean Economy	
	IS407 Global Political Economy	IS502 International Finance IS503 Korean Economy	IS516 Development Assistance: Management and Evaluation	IS518 International Security IS519 Principles of International Law	
	IS501 International Trade Law	IS508 Multinational Business Policy	IS529 Special Topics in Development	IS531 Special Topics in International Relations	
	IS502 International Finance	IS509 Corporate Restructuring and Global Strategy	IS533 Private Sector and Development	IS536 Global Governance and Human Security	
	IS503 Korean Economy	IS512 International Corporate Finance	IS534 CSR and Development Cooperation	IS538 East Asian Thought and Culture	
	IS525 Special Topics in International Trade and Finance	IS522 International Business Law	IS536 Global Governance and Human Security	IS540 Multiethnic Societies and Conflict Management	
	IS534 CSR and Development Cooperation	IS524 Financial Accounting IS527 Special Topics in International Business and Finance (A)	IS538 East Asian Thought and Culture	IS548 Special Topics on China IS614 NGOs and International Cooperation	
	IS541 East Asian Economies	IS528 Special Topics in International Business and Finance (B)	IS540 Multiethnic Societies and Conflict Management IS543 Regional Integration and Cooperation	IS618 Cross-Cultural Communications	
	IS542 Foreign Direct Investment: Theory and Practice	IS533 Private Sector and Development	IS544 Trade and Development IS548 Special Topics on China IS614 NGOs and International Cooperation	IS621 Women and International Cooperation	
	IS543 Regional Integration and Cooperation	IS534 CSR and Development Cooperation	IS618 Cross-Cultural Communications	IS 625 Women in East Asia IS645 Sustainable Development	
	IS544 Trade and Development	IS534 CSR and Development Cooperation	IS621 Women and International Cooperation	IS647 International Human Rights	
	IS546 Case Studies in Trade Dispute	IS548 Special Topics on China	IS622 Gender and Development IS 625 Women in East Asia IS641 Corporate Governance and Social Responsibility	IS649 International Relations of East Asia	
	IS547 FTA and the Global Trading System	IS615 Global Marketing and Advertising Strategies	IS645 Sustainable Development IS646 Finance and Development IS647 International Human Rights IS648 Poverty and Development IS664 East Asian Politics and Societies	IS650 Public Diplomacy IS652 Special Topics in International Legal Studies	
	IS548 Special Topics on China	IS618 Cross-Cultural Communications	IS670 Political Economy of Development	IS664 East Asian Politics and Societies	
	IS646 Finance and Development	IS624 Global Women Leadership and HRD	IS671 Human Security and Development	IS671 Human Security and Development	
	IS681 Special Topics on the EU	IS641 Corporate Governance and Social Responsibility	IS672 Peace-Building and Development in Conflict Areas	IS672 Peace-Building and Development in Conflict Areas	
	IS682 Regional Integration in Europe and Asia: Comparative Perspectives	IS642 International Investments and Capital Markets	IS681 Special Topics on the EU IS682 Regional Integration in Europe and Asia: Comparative Perspectives	IS681 Special Topics on the EU IS682 Regional Integration in Europe and Asia: Comparative Perspectives	
	IS705 Special Topics on the US	IS643 Labor Relations	IS705 Special Topics on the US IS721 Political Economy of East Asia	IS705 Special Topics on the US IS721 Political Economy of East Asia	
	IS721 Political Economy of East Asia	IS681 Special Topics on the EU	IS744 International Organizations IS923 Advanced Topics in Development Cooperation I	IS744 International Organizations	
	IS744 International Organizations	IS705 Special Topics on the US	IS924 Advanced Topics in Development Cooperation II		

Classification		Courses	Credits
5. 21 <sup>st</sup> Century Program (Select one field) (Optional)	International Conflict Management	IS201 International Negotiations and Strategy: Theory and Practice IS519 Principles of International Law IS536 Global Governance and Human Security IS540 Multiethnic Societies and Conflict Management IS546 Case Studies in Trade Disputes IS618 Cross-Cultural Communications IS643 Labor Relations IS652 Special Topics in International Legal Studies IS672 Peace-Building and Development in Conflict Areas IS682 Regional Integration in Europe and Asia: Comparative Perspectives IS744 International Organizations	Optional (Minimum 9 for selected field)
		IS611 International Public Relations IS613 Comparative Society and Culture IS615 Global Marketing and Advertising Strategies IS616 Special Topics on International Public Relations IS618 Cross-Cultural Communications IS641 Corporate Governance and Social Responsibility IS662 International Journalism and Mass Communication	
	International Legal Studies	IS501 International Trade Law IS519 Principles of International Law IS522 International Business Law IS641 Corporate Governance and Social Responsibility IS647 International Human Rights IS652 Special Topics in International Legal Studies	
	Women and HRD	IS621 Women and International Cooperation IS622 Gender and Development IS623 Women and Human Rights IS624 Global Women Leadership and HRD IS625 Women in East Asia IS643 Labor Relations	
	CSR and Public-Private Partnership	IS404 International Business Management and Strategy IS508 Multinational Business Policy IS533 Private Sector and Development IS534 CSR and Development Cooperation IS641 Corporate Governance and Social Responsibility	
	International Studies in East Asia	IS503 Korean Economy IS538 East Asian Thought and Culture IS541 East Asian Economies IS548 Special Topics on China IS625 Women in East Asia IS664 East Asian Politics and Societies IS649 International Relations of East Asia IS682 Regional Integration in Europe and Asia: Comparative Perspectives IS721 Political Economy of East Asia IS731 Korean Politics IS732 Korean History and Culture KS506 Comparative Studies of the East Asian Cultures	
6. Internship (Optional)		IS801 Internship I or IS804 Internship IV - 4 months international internship	9
		IS802 Internship II or IS805 Internship V - 3 months international (or 4 months domestic) internship	6
		IS803 Internship III or IS806 Internship VI - 1.5 months international (or 2 months domestic) internship	3
7. Research (Optional)		R0001 Independent Study	3
8. Thesis (Optional)		Z0001 Thesis Research	3 [Optional] (P/NP)
Total Credits Required for Graduation			41

Note: \* Students in Ewha-KOICA Master’s Program in International Studies (Women and Development) should take IS308 instead of IS302.  
\*\* In addition to IS410, students in Ewha-KOICA Master’s Program in International Studies (Women and Development) should take IS309.

Doctor of Philosophy in International Studies

Classification	Courses				Credits
1. M.I.S. Courses	Master’s Level Courses				24
2. Required Courses	IS901 Seminar in International Studies IS902 Advanced Statistical Analysis				6
Functional Concentration	International Trade & Investment (ITI)	International Business (IB)	Development Cooperation (DC)	International Relations (IR)	Minimum 18
3. Functional Concentration Courses (Select six courses)	IS201 International Negotiations and Strategy: Theory and Practice IS401 International Economic Relations IS403 International Trade Policy IS407 Global Political Economy IS501 International Trade Law IS502 International Finance IS503 Korean Economy IS525 Special Topics in International Trade and Finance IS534 CSR and Development Cooperation IS541 East Asian Economies IS542 Foreign Direct Investment: Theory and Practice IS543 Regional Integration and Cooperation IS544 Trade and Development IS546 Case Studies in Trade Dispute IS547 FTA and the Global Trading System IS548 Special Topics on China IS646 Finance and Development IS681 Special Topics on the EU IS682 Regional Integration in Europe and Asia: Comparative Perspectives IS705 Special Topics on the US IS721 Political Economy of East Asia IS744 International Organizations IS905 Advanced Topics in International Finance IS921 Advanced Topics in Foreign Direct Investment IS922 Advanced Topics in International Trade Negotiations IS926 Advanced Topics in International Trade Law IS927 Advanced Topics in International Trade Policy	IS201 International Negotiations and Strategy: Theory and Practice IS401 International Economic Relations IS404 International Business Management and Strategy IS502 International Finance IS503 Korean Economy IS508 Multinational Business Policy IS509 Corporate Restructuring and Global Strategy IS512 International Corporate Finance IS522 International Business Law IS524 Financial Accounting IS527 Special Topics in International Business and Finance (A) IS528 Special Topics in International Business and Finance (B) IS533 Private Sector and Development IS534 CSR and Development Cooperation IS548 Special Topics on China IS615 Global Marketing and Advertising Strategies IS618 Cross-Cultural Communications IS624 Global Women Leadership and HRD IS641 Corporate Governance and Social Responsibility IS642 International Investments and Capital Markets IS643 Labor Relations IS681 Special Topics on the EU IS705 Special Topics on the US IS721 Advanced Topics in International Business IS929 Advanced Topics in Corporate Finance	IS201 International Negotiations and Strategy: Theory and Practice IS401 International Economic Relations IS403 International Trade Policy IS407 Global Political Economy IS410 Development Cooperation: Theory and Practice IS503 Korean Economy IS516 Development Assistance: Management and Evaluation IS529 Special Topics in Development IS533 Private Sector and Development IS534 CSR and Development Cooperation IS536 Global Governance and Human Security IS538 East Asian Thought and Culture IS540 Multiethnic Societies and Conflict Management IS543 Regional Integration and Cooperation IS544 Trade and Development IS548 Special Topics on China IS614 NGOs and International Cooperation IS618 Cross-Cultural Communications IS621 Women and International Cooperation IS622 Gender and Development IS625 Women in East Asia IS641 Corporate Governance and Social Responsibility IS645 Sustainable Development IS646 Finance and Development IS647 International Human Rights IS648 Poverty and Development IS664 East Asian Politics and Societies IS670 Political Economy of Development IS671 Human Security and Development IS672 Peace-Building and Development in Conflict Areas IS681 Special Topics on the EU IS682 Regional Integration in Europe and Asia: Comparative Perspectives IS705 Special Topics on the US IS721 Political Economy of East Asia IS744 International Organizations IS908 Advanced Seminar in Globalization and Development IS923 Advanced Topics in Development Cooperation I IS924 Advanced Topics in Development Cooperation II	IS201 International Negotiations and Strategy: Theory and Practice IS401 International Economic Relations IS407 Global Political Economy IS408 International Relations: Theory and Practice IS518 International Security IS519 Principles of International Law IS531 Special Topics in International Relations IS536 Global Governance and Human Security IS538 East Asian Thought and Culture IS540 Multiethnic Societies and Conflict Management IS548 Special Topics on China IS613 Comparative Society and Culture IS614 NGOs and International Cooperation IS618 Cross-Cultural Communications IS621 Women and International Cooperation IS 625 Women in East Asia IS643 Labor Relations IS645 Sustainable Development IS647 International Human Rights IS649 International Relations of East Asia IS650 Public Diplomacy IS652 Special Topics in International Legal Studies IS664 East Asian Politics and Societies IS671 Human Security and Development IS672 Peace-Building and Development in Conflict Areas IS681 Special Topics on the EU IS682 Regional Integration in Europe and Asia: Comparative Perspectives IS705 Special Topics on the US IS721 Political Economy of East Asia IS744 International Organizations IS911 Advanced Topics in International Law IS912 Theory and Ideology in International Affairs IS925 Advanced Topics in International Conflict Management	18

Classification		Courses	Credits
5. 21 <sup>st</sup> Century Program (Select one field) (Optional)	International Conflict Management	IS201 International Negotiations and Strategy: Theory and Practice IS519 Principles of International Law IS536 Global Governance and Human Security IS540 Multiethnic Societies and Conflict Management IS546 Case Studies in Trade Disputes IS618 Cross-Cultural Communications IS643 Labor Relations IS652 Special Topics in International Legal Studies IS672 Peace-Building and Development in Conflict Areas IS682 Regional Integration in Europe and Asia: Comparative Perspectives IS744 International Organizations	Optional (Minimum 9 for selected field)
	International Public Relations	IS611 International Public Relations IS613 Comparative Society and Culture IS615 Global Marketing and Advertising Strategies IS616 Special Topics on International Public Relations IS618 Cross-Cultural Communications IS641 Corporate Governance and Social Responsibility IS662 International Journalism and Mass Communication	
	International Legal Studies	IS501 International Trade Law IS519 Principles of International Law IS522 International Business Law IS641Corporate Governance and Social Responsibility IS647 International Human Rights IS652 Special Topics in International Legal Studies	
	Women and HRD	IS621 Women and International Cooperation IS622 Gender and Development IS623 Women and Human Rights IS624 Global Women Leadership and HRD IS625 Women in East Asia IS643 Labor Relations	
	CSR and Public-Private Partnership	IS404 International Business Management and Strategy IS508 Multinational Business Policy IS533 Private Sector and Development IS534 CSR and Development Cooperation IS641 Corporate Governance and Social Responsibility	
	International Studies in East Asia	IS503 Korean Economy IS538 East Asian Thought and Culture IS541 East Asian Economies IS548 Special Topics on China IS625 Women in East Asia IS664 East Asian Politics and Societies IS649 International Relations of East Asia IS682 Regional Integration in Europe and Asia: Comparative Perspectives IS721 Political Economy of East Asia IS731 Korean Politics IS732 Korean History and Culture KS506 Comparative Studies of the East Asian Cultures	
6. Research (Optional)		R0001 Independent Study	3
7. Dissertation Seminar		Z0002 Dissertation Research I Z0003 Dissertation Research II	P/NP (2 Semesters)
Total Credits Required for Graduation			60

Master of Arts in Korean Studies / Doctor of Philosophy in Korean Studies

Classification	Korean Culture		Teaching Korean as a Foreign Language	
Functional Elective Courses	KS502	Korean Society and its Culture	KS519	Korean Linguistics for Teaching Korean as a Foreign Language
	KS503	Value System of Korean People	KS520	Korean Language Use Standard
	KS504	Seminar in the Korea Studies I	KS521	Acquisition of Korean as a Foreign Language
	KS505	Seminar in the Korea Studies II	KS522	Korean Applied Linguistics
	KS506	Comparative Studies of the East Asian Cultures	KS523	Methodology of Teaching Korean as a Foreign Language
	KS507	Aesthetic View of Korean People	KS526	Testing in Korean as a Foreign Language
	KS509	Introduction to the Korean Folklore	KS527	Curriculum in Korean as a Foreign Language
	KS512	Korean Religions	KS528	Materials in Korean as a Foreign Language
	KS513	Graduate Seminar in Korean Visual Culture	KS529	Research Methods for Teaching Korean as a Foreign Language
	KS514	Studies in Contemporary Korean Culture	KS532	Practicum in Teaching Korean as a Foreign Language
	KS541	Proseminar in Korean Cultural Studies I	KS533	Speaking & Listening in Korean for Academic Purposes I
	KS542	Proseminar in Korean Cultural Studies II	KS534	Reading & Writing in Korean for Academic Purposes I
	KS543	Understanding Korean Cultural Studies I	KS535	Speaking & Listening in Korean for Academic Purposes II
	KS544	Understanding Korean Cultural Studies II	KS536	Reading & Writing in Korean for Academic Purposes II
	KS545	Graduate Seminar in Korean Everyday Life	KS537	Dissertation and Thesis Writing for International Students
	KS546	Exploring Korean Cultural History through Cinema I	KS560	Teaching Listening in Korean as a Foreign Language
	KS547	Production Workshop	KS561	Teaching Speaking in Korean as a Foreign Language
	KS548	Academic English for Korean Studies	KS562	Teaching Reading in Korean as a Foreign Language
	KS549	Professional English for Korean Studies	KS563	Teaching Writing in Korean as a Foreign Language
	KS550	Introduction to Korean Studies I	KS564	Teaching Grammar in Korean as a Foreign Language
	KS551	Introduction to Korean Studies II	KS565	Teaching Vocabulary in Korean as a Foreign Language
	KS552	Proseminar in Contemporary Korean Culture	KS566	Teaching Pronunciation in Korean as a Foreign Language
	KS553	Proseminar in Korean Artistic Tradition	KS567	Teaching Pragmatics in Korean as a Foreign Language
	KS554	Exploring Korean Urban Landscape	KS568	Multilingual and Multicultural Education
	KS555	Seminar in Korean Visual Image	KS571	Seminar in Teaching Korean as a Foreign Language I
	KS601	Advanced Study in Korean Studies Materials	KS572	Seminar in Teaching Korean as a Foreign Language II
	KS602	Seminar in Korean Perspective toward Death	KS573	Seminar in Teaching Korean as a Foreign Language III
	KS603	Seminar in Korean Cultural Contents I	KS619	Korean Phonology
	KS604	Seminar in Korean Cultural Contents II	KS620	Korean Morphology & Syntax
	KS605	Seminar in Ethnomusicology	KS621	Korean Semantics & Pragmatics
	KS606	Myths and Tales of Korea	KS622	Psycholinguistics for Teaching Korean as a Foreign Language
	KS607	Seminar in Korean Studies of Foreign Countries	KS623	Sociolinguistics for Teaching Korean as a Foreign Language
	KS608	Introduction to the Korean Art	KS626	Korean Literature for Teaching Korean as a Foreign Language
	KS609	Issues in the Korean Studies I	KS627	Multimedia & Teaching Korean as a Foreign Language
	KS610	Issues in the Korean Studies II	KS628	Korean for Specific Purposes
	KS611	Advances Study in Korean Shamanism	KS629	Studies in Korean Interlanguage
	KS612	Advances Study in Korean Confucianism	KS630	Discourse Analysis for Teaching Korean as a Foreign Language
	KS613	Advances Study in Korean Buddhism	KS631	Corpus Linguistics for Teaching Korean as a Foreign Language
	KS614	Advanced Study in Korean Ethnic Religion	KS632	Language Education Policy in Multicultural Societies
	KS615	Korean Culture and Digital Media I	KS633	Translation in Korean
	KS616	Korean Culture and Digital Media II	KS634	Quantitative Research Methods for Teaching Korean as a Foreign Language
	KS662	Exploring Korean Cultural History through Cinema II	KS635	Qualitative Research Methods for Teaching Korean as a Foreign Language
	KS663	Advanced Study in Korean Everyday Life	KS636	Classroom Research in Teaching Korean as a Foreign Language
	KS664	Advanced Study in Korean Art History	KS637	Special Topics in Teaching Korean as a Foreign Language I
	KS665	Advanced Study in Korean Religion	KS638	Special Topics in Teaching Korean as a Foreign Language II
	KS666	Advanced Study in Korean Popular Culture	KS639	Special Topics in Teaching Korean as a Foreign Language III
	KS667	Visual Korean Studies	KS640	Seminar in Teaching Speaking in Korean as a Foreign Language
	KS668	Seminar in Korean Aesthetics	KS641	Seminar in Teaching Listening in Korean as a Foreign Language
	KS669	Advanced Independent Study I	KS642	Seminar in Teaching Reading in Korean as a Foreign Language
	KS670	Advanced Independent Study II	KS643	Seminar in Teaching Writing in Korean as a Foreign Language
	KS700	Modern Korean Literature	KS644	Seminar in Acquisition of Korean as a Foreign Language
	KS701	Modern Korean History	KS645	Seminar in Testing and Evaluation in Korean as a Foreign Language
	KS702	Korean Visual Culture	KS646	Seminar in Teaching Grammar in Korean as a Foreign Language
	KS703	Seminar in Korean Studies I	KS647	Seminar in Teaching Vocabulary in Korean as a Foreign Language
	KS704	Seminar in Korean Studies II	KS648	Seminar in Materials in Korean as a Foreign Language
	KS705	Special Topics in Korean Studies I	KS649	Seminar in Curriculum in Korean as a Foreign Language
	KS706	Special Topics in Korean Studies II	KS650	Seminar in Korean for Specific Purposes
	KS707	Advanced Korean Studies I	KS651	Action Research in Teaching Korean as a Foreign Language
	KS708	Advanced Korean Studies II	KS655	Task-Based Korean Language Education
	KS709	Special Topics in East Asian Studies	KS656	Research Methods for Acquisition of Korean as a Foreign Language
			KS657	Instructed Second Language Acquisition
Internship	KS803	Field Research Internship I	KS811	International Internship in Teaching Korean as a Foreign Language: Teaching I
			KS812	International Internship in Teaching Korean as a Foreign Language: Teaching II
			KS813	International Internship in Teaching Korean as a Foreign Language: Administration I
			KS814	International Internship in Teaching Korean as a Foreign Language: Administration II
			KS821	Domestic Internship in Teaching Korean as a Foreign Language: Teaching I
	KS804	Field Research Internship II	KS822	Domestic Internship in Teaching Korean as a Foreign Language: Teaching II
Thesis	Z0001	Thesis Research	KS823	Domestic Internship in Teaching Korean as a Foreign Language: Teaching II
	Z0002	Dissertation Research I	KS824	Domestic Internship in Teaching Korean as a Foreign Language: Teaching II
	Z0003	Dissertation Research II	KS825	Domestic Internship in Teaching Korean as a Foreign Language: Administration I
			KS826	Domestic Internship in Teaching Korean as a Foreign Language: Administration II

Becoming a Part of Ewha GSIS

■ Admissions

Ewha GSIS admits students for both Spring (March) and Fall (September) semesters.

Selection Process	For Spring Entrance	For Fall Entrance
Submission of Application Forms and Documents	Early November	Early May
Notification for Document Screening Result	November	May
Interview	Early December	Early June
Final Acceptance Notification	Late December	Late June
Tuition Payment / Issuance of Letter of Acceptance	Mid-January	Mid-July
Orientation for Incoming Students and Course Registration	Mid-February	Mid-August
Semester Starts/Ends	March 2 ~ mid-June	September 1~ mid-December

Application information and forms are available at Ewha GSIS website → Admission. (<http://gsis.ewha.ac.kr>)

■ Tuition and Scholarships

1. Estimated Costs for Full-time Graduate Study (for 4 regular semesters)

University Tuition and Fees	\$25,000
Entrance Fee	\$900
Sub-total:	\$25,900
Housing, Meals, Other	\$21,000
Books, Supplies	\$4,000
Sub-total:	\$25,000
Total	\$50,900

2. Scholarships

GSIS Scholarships (semester-based) are selectively awarded to outstanding students chosen by the GSIS Scholarship Committee (as of September 2011).

Type of Scholarship	Amount		Classifications	Selection Process
GSIS Jin Scholarship	Full tuition for one semester		Both for incoming and current students	No application required
GSIS Sun Scholarship	Half of full tuition for one semester		Both for incoming and current students	No application required
GSIS KOICA-Sun (Scholarship on a Working Basis)	Half of full tuition for one semester		Both for incoming and current students	For incoming students, no application required. Application required for current students as semester-based (Working at GSIS-related administrative offices.)
POSCO Asia Fellowships Program ( <a href="http://www.postf.org">http://www.postf.org</a> )	Full tuition and stipend for two years		For incoming foreign students from Asian areas who apply for Korean Studies Department	Application for scholarship with admission package submission
Ewha Scholarship on a Working Basis (Capability to work in Korean may be required)	A-level	3,640,000 KRW/Semester	Both for incoming and current students	Application to respective Ewha administrative office (Working 20 hours/week, total 480 hours)
	B-level	1,820,000 KRW/Semester	Both for incoming and current students	Application to respective Ewha administrative office (working 10 hours/week, Total 240 hours)
International Long-term Internship	1,000,000 KRW		For current students	Determining factors: Internship length, institution (UN, or organizations under UN)
Research Assistantship	- Semesters 1-4: Full tuition - After coursework completion: Master's: 2,000,000 KRW Ph.D.:3,000,000 KRW		Both for incoming and current students	Respective professor to be assigned RA for semester or yearly basis

[International Studies]

Distinguished Global Lecture Series

GSIS invites distinguished guests to give students and the public opportunities to learn practical knowledge in different international fields. Topics presented at the workshop include current and controversial international events, which shape the politics, economy and society of the global village. The workshops are usually held from 3:30 pm to 5 pm on Fridays. Recent speakers and topics include the following:

- “EU’s Climate Change Policy” by Uwe Wissenbach (1st Counsellor & Deputy Head of Mission, The Delegation of the EU to the Republic of Korea), April 2011
- “The Era of Success - Career Progression in Your Life” by Ms. Mijin Cho (Vice President, Head of HR Management, LG Display), May 2011
- “Ambassador, Embassy of Germany in Korea” by Dr. Hans-Ulrich Seidt (Women & political changes in the 21st Century), June 2011
- “United Nations Development Assistance and Asia” by Stephen Brown (Director of Future of the UN Development System (FUNDS) Project, Geneva (recommended by Frances Hill, DSA)), May 2011
- “Foreign Aid Practices in Africa: Do Donors Differ?” by Raymond Muhula (Public Sector Specialist, World Bank), May 2011
- “Low Carbon Economies Towards 2050” by Connie Hedegaard (European Commissioner for Climate Action), April 2011
- “Educational Development in Europe in the Context of the First Generation of Mass Education in Northern Ireland” by Eamon McKee (Ambassador, Embassy of Ireland in Korea), October 2010
- “What does the G20 Seoul Summit Mean to the Future of the World?” by Sa Kong Il (Chairman of Presidential Committee for G20 Summit), September 2010
- “Economic Integration of ASEAN Countries: Objectives and Current Status” by Chua Thai Keong (Ambassador, Embassy of Singapore in Korea), May 2009
- “Australia-Korea Relations” by Sam Gerovich (Ambassador, Embassy of Australia in Korea), November 2009
- “Refugee Protection in a Globalized World” by Janice Marshall (UNHCR), April 2008
- “EU: Second Try to Reform” by Tomas Smetanka (Ambassador, Embassy of Czechoslovakia in Korea), April 2008
- “Isreal and the Middle East” by Yigal Caspi (Ambassador, Embassy of Israel in Korea), March 2008

Special Lectures

- “Ambassador of the Permanent Delegation of the Republic of Korea to the OECD” by Kyung Wook Hur (The Changing World and Korea’s New Initiative), 17-Jun-11
- “Strong Women, Strong Nation: Celebrating 10 Years Service to the Women and Children of Timor-Leste” by H.E. Kirsty Gusmao (Founder, Alola Foundation in East Timor), 23-Mar-11
- “The Expansion of Women’s Role in Society” by Loretta Sanchez (US Congresswoman (California)), 23-Mar-11
- “Policy Case Studies of European Donor Countries” by Peter Hansen (Ambassador, Royal Danish Embassy in Korea), 26-Nov-10
- “El Sistema: Activism Through Music in Central and South America” by Dr. José Antonio Abreu (10th Seoul Peace Prize laureate), 28-Oct-10
- “Development Cooperation and Effectiveness” by Dr. Eun Pyo Hong (Organization for Economic Co-operation and Development (OECD)), 25-Feb-09
- “Work of UNIFEM” by Inés Alberdi (Executive Director, UNIFEM (United Nations Development Fund for Women)), 03-Dec-08

[Korean Studies]

Oceania Workshop

The Oceania Korean Studies workshop is a project for educators such as middle school teachers and educational administrators from major English speaking countries in order to inform true and practical knowledge and information through seminars about general Korean studies, including Korean history, society, culture and education as well as through various activities such as a Korean home visit, traditional Korean home experience, and Korean history visits. As educators from each country share educational experiences and new ideas about the method of teaching, this project is an opportunity that provides quality education effectively at schools overseas.



Institute for International Trade and Cooperation

The Institute for International Trade and Cooperation (IITC) serves as a subsidiary institution of the Graduate School of International Studies (GSIS) at Ewha for research, workshops and conferences, publications, education and training and international networking. IITC was recently awarded Ewha Global Top 5 Projects for its research on “Social Capital, Democratic Governance, and Corporate Social Responsibility.”

Through the publication of the International Studies Review, the Institute acts as a vanguard and medium for the exchange of ideas and information between learned scholars from around the world. For education and training, IITC focuses on Conflict Management/Resolution and Global Leadership training in collaboration with internationally renowned institutions.

Journal

The *International Studies Review (ISR)* is a scholarly, peer-reviewed journal (published biannually in June and December) under the supervision of Ewha Graduate School of International Studies (GSIS) and the Institute for International Trade and Cooperation (IITC). It has been ranked in the top bracket of evaluation by the National Research Foundation of Korea and is endorsed by the Korean International Studies Association (KISA) as its official publication for academics. Since the first publication in December 1997, the ISR has actively advanced research on contemporary international challenges. Past issues have included papers from a broad spectrum of fields related to international studies, including international economics, international politics, international law, international business, development cooperation, and cultural studies.



Institute for Development and Human Security

The Global Cooperation Center (GCC) was founded at Ewha Womans University in September 2007. The purpose of its establishment was to become Korea’s first think-tank devoted to the multidisciplinary research and outreach programs on development studies with a special emphasis on Official Development Assistance (ODA). The GCC was renamed as the Institute for Development and Human Security (IDHS) in 2009 to better reflect its expanded research interests.

IDHS is the only research institute on development and human security founded under a university. It has strived to provide Korea’s development experiences to developing countries and induce national consensus and support for ODA through education and research.

IDHS has two areas of research emphases: comparative analysis of development cooperation in recipient countries, and development cooperation in the context of human security and in conflict-affected areas.

In June, 2009, IDHS was awarded the World Class University (WCU) grant by the Ministry of Education, Science and Technology of the Korean government for 5 years (2009-2013). The main purpose of the institute is to carry out the research on “Cross-National Comparative Analysis of the Effectiveness of Development Assistance.”

- IDHS aims to achieve the following goal through the WCU Project: Examine South Korea as an emerging donor of ODA and to conduct comparative analysis of best practices as well as other emerging donors for effective ODA implementation focusing on the following.
- 1) development through ODA
  - 2) human security and development
  - 3) ODA in conflict-affected areas



Participation for Research Activities

Institute for Development and Human Security (IDHS) at Ewha Womans University is seeking M.I.S. course / Ph.D. course researchers. The researcher will be expected to participate in large research projects in the areas of either Development Cooperation or Human Security and their related fields as part of the World Class University project funded by the government of the Republic of Korea. Candidates must be a M.I.S or Ph.D. course student of the Department of International Studies, Ewha Graduate School of International Studies (GSIS). The successful candidate will have outstanding research potential and English proficiency at the native speaker level. Salary is competitive.

Special Programs



Ewha-KOICA Master’s Program in International Studies (Women and Development)

In 2007, to continue the tradition and professionalism of Ewha in educating women and to share Korea’s development experience, Ewha GSIS founded the Ewha-KOICA Master’s Program in collaboration with the Korea International Cooperation Agency (KOICA). It is the only program in Korea that offers curricula for development cooperation specializing in women and development.

As recognized under the United Nations Millennium Development Goals, training and educating women has been recognized as one of the most important preconditions to political, economic and social development. In other words, the role of women leaders in developing countries is essential not only for achieving gender equality and empowerment, but also for the attainment of the nation’s development as a whole.

In this regard, the Ewha-KOICA program provides aspiring students from developing countries top-quality training and education to become global leaders. Their expertise in international development will enable them to contribute to economic development and eradication of poverty through women’s empowerment. It also offers a springboard for women government officials and researchers from developing countries who can later work as experts in the field of women and development in their own countries. The Ewha-KOICA Program, therefore, makes a strong and positive contribution to the eradication of poverty and inequality in developing countries.



World Class University (WCU) Program

The World Class University (WCU) project was launched by the Ministry of Education, Science and Technology of the Republic of Korea in 2008. Its aim is to enable Korean universities to recruit world-renown scholars from around the world to help raise the global standing of the universities and to contribute toward research in key growth-generating fields.

With a vision to enhance the competence of Korean universities and to nurture high-quality human resources, the WCU project seeks to achieve the two following goals:

- 1) Enhance national, higher educational and industrial competitiveness in inter-disciplinary fields
- 2) Transform Korean universities into world-class research institutions

The WCU project focuses on fostering research in key fields and ensuring quality in the development of next-generation human resources. It supports new growth-generating technologies that will spearhead national development and promote knowledge based services and new industries. The ministry especially gives high priority to interdisciplinary studies that consolidate the fields of basic sciences, humanities and social sciences which will contribute to national, social and academic development.

Moreover, recruiting international scholars who possess advanced research capabilities will innovate the educational and research environment of Korean universities. Hence, the world-renown scholars will act as catalysts to bring innovation and creativity to research and education while taking residence in Korea’s leading universities.

Currently, the Institute for Development and Human Security (IDHS) works with two distinguished scholars in development and human security. Professor Barbara Stallings, the William R. Rhodes Research professor at Brown University and Professor Jae- Jung Suh of the Nitze School of Advanced International Studies (SAIS), Johns Hopkins University, will bring their extensive research on development, finance, human security and fragile states to our program. This will guarantee cooperation among diverse perspectives on development and human security. In addition, partnership with various organizations will help coordinate academics and practice.

Ewha-Harvard Summer School Program

Ewha Womans Unviersity has been working with the Harvard Summer School for since 2006 on the Ewha-Harvard Summer School Program. This program allows Ewha and Harvard Summer School students the opportunity to take classes taught by Harvard professors and to delve deeper into the study of Korea’s culture, history, literature, politics, society, and language.

Along with the classes, students also have the opportunity to engage in various academic/cultural activities related to the courses. Each year this program offered different classes.

Professor David McCann: “Korea@2100”  
Professor Carter J. Eckert: “The Two Koreas”  
Professor David McCann: “The Korea Wave” [한류]  
Professor Mark Byington: “Adventures in Early Korean History and Archaeology”  
Professors Michael Herzfeld and Elise M. Prebin: “Experiencing Korea, Experiencing Comparison”  
In 2011, the program offered for the first time a course entitled “Cinema Seoul: Documenting Korea Through Film,” that presented students with the opportunity to view Korean history and culture from a different perspective behind camera lenses. Split into groups of four and armed with filming equipment, students embarked on the task of filming various aspects of Korean culture in Seoul. Afterward, they diligently compiled their clips into 15-20 minute documentaries and on July 29 presented their final products at the 2011 Ewha-Harvard Student Documentary Film Festival.



Ewha-KF Global E-School

1. Ewha-KF Global E-School

This program provides real time delivery of high-level Korean Studies lectures and seminars to students of distinguished universities abroad who have difficulty receiving excellent Korean Studies lectures due to restrictions in curriculum and faculty. Starting in 2011, this program will expand to short-term training program in 2012, and long-term studies abroad in 2013.



2. Real-time lectures from 2011 to 2013

Year	Opened (Scheduled Lectures)
2011	Globalization and South Korean Chaebol Korean Traditional Music International Development Cooperation Understanding World Heritage in Korea
2012	Introduction to Electronic Commerce Introduction to Korean Religions East Asian Culture and Thought 인간행위와 사회구조 (한국어) [Human Behavior and Social Structure (in Korean)] 한국 근,현대사의 이해 (한국어) [Understanding of Contemporary and Modern History (in Korean)]
2013	An Introduction to Women’s Studies in Korea Culture and Environment of Korea: A Geography 미디어와 사회 (한국어) [Media and Society (in Korean)] 북한정치론 (한국어) [North Korean Political Theory (in Korean)] 한국경제사 (한국어) [Korean Economic History (in Korean)]



Dual Master of International Studies Degree Program



A nine-month program for Master’s alumni of Ewha’s Graduate School of International Studies: the Master of International Studies at the GW Elliott School of International Affairs, Washington, D.C.

The **Master of International Studies** (MIS) at the Elliott School of International Affairs, George Washington University, is offered exclusively to recent alumni of our international partners, including Ewha GSIS.

A first-hand experience in Washington, D.C. is an invaluable opportunity to study this city’s unique perspective and influence upon world events. The nine-month M.I.S program provides this experience through courses and professional activities that link theory and practice of international affairs.

The MIS. is designed to build from a Master’s degree at GSIS with complementary coursework in global issues (Conflict Resolution; Security Studies; Economic Affairs; Development; International Public Health; Technology; International Organizations; or U.S. Foreign Policy) or a region (Asia, the Middle East, the Americas, Europe & Eurasia). Students also take professional skills training courses. In lieu of a thesis, all M.I.S. students complete a capstone course in which they work in teams on a particular policy issue and present a professional report to a client in the public, private, or non-profit sector. For more information about the MIS, please visit below website.  
<http://www.gwu.edu/~elliott/academics/grad/mis/>

The one-year Master of International Studies (MIS) is multi-disciplinary, enabling students to take courses from across George Washington University. By complementing previous Master’s coursework, students develop specialized knowledge of a related contemporary global issue or world region, as well as the professional skills necessary for careers in international affairs. The 28-credit MIS requires students to take a minimum of 19 credit hours in residence at GW during one academic year. The remaining 9 credits are transferred from the international partner to fulfill core field, major field, or electives.



Admissions to the Master of International Studies

The MIS is a nine-month program designed exclusively for current students or recent alumni from Master’s degrees programs at Elliott School international partners. The application deadline is mid-January to begin MIS classes on late August.

Non-Degree Exchange Program

General Exchange Program

Exchange opportunities with Ewha exchange partners via Ewha Office of Global Affairs are available.

Exchange Program

**The Elliott School of International Affairs, George Washington University**  
Ewha GSIS students on their Masters-level program can apply to spend one fall or spring semester as non-degree, exchange students at the Elliott School. Exchange students enroll in regular graduate-level classes, but do not earn a Masters degree from GW.

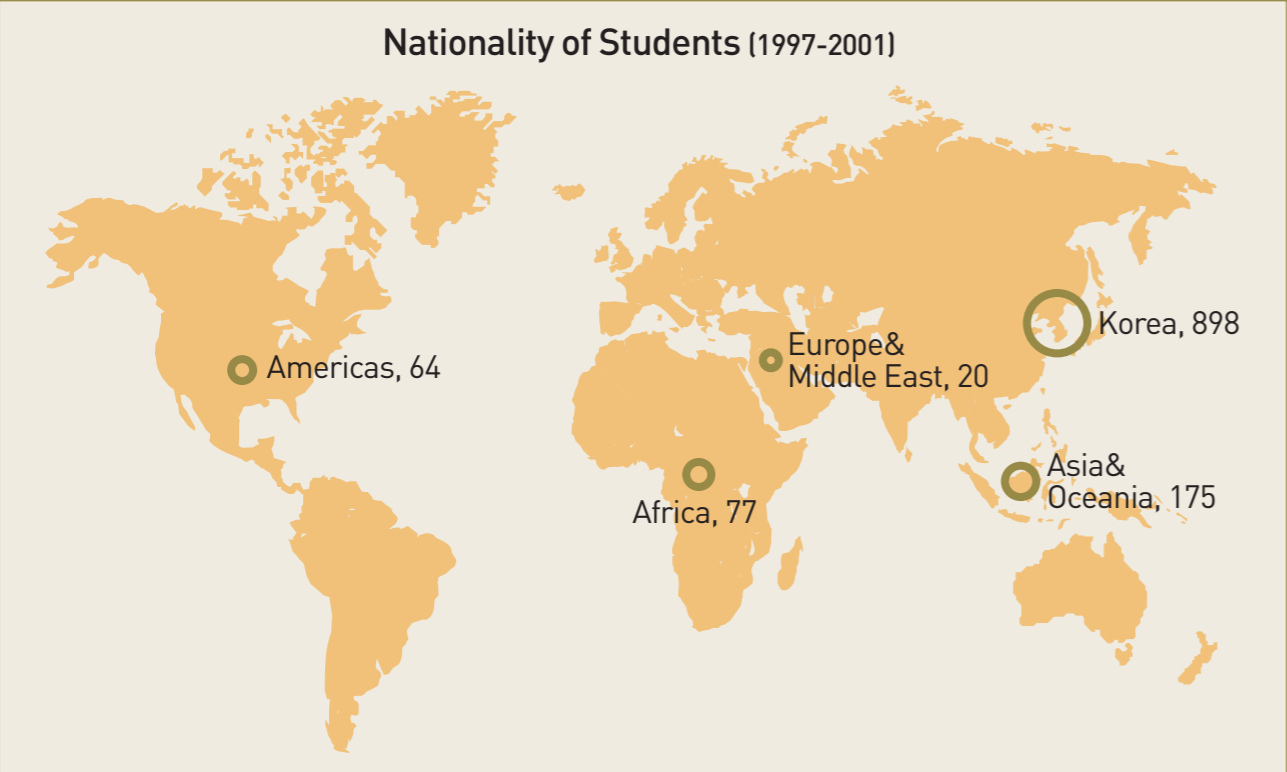
Credit Exchange Program

Students can take up to 9 exchange credits at other GSIS schools and Ewha Graduate Schools. Participating institutions are as below:

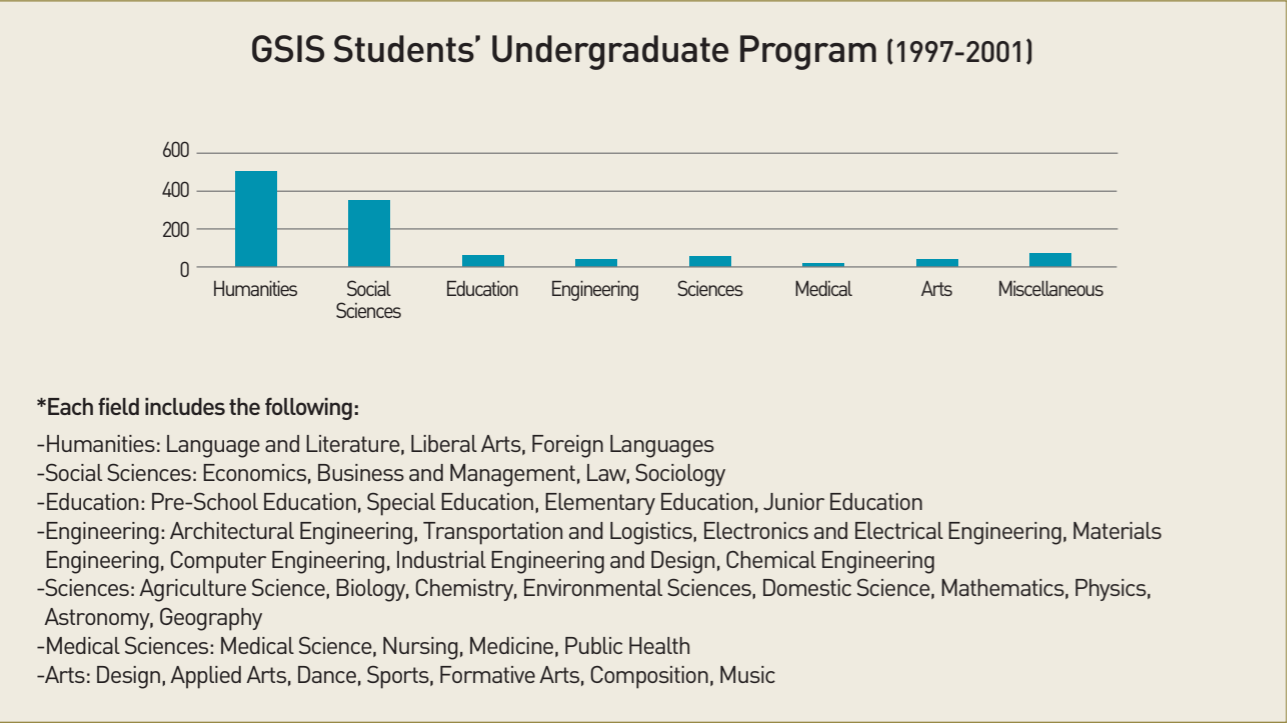
<div>Chung-Ang University</div>	Graduate School of International Studies	<div>Seoul National University</div>	School of International and Area Studies
<div>Hankuk University of Foreign Studies</div>	Graduate School of International Area Studies	<div>Sogang University</div>	Graduate School of International Studies
<div>Hanyang University</div>	Graduate School of Asia-Pacific Studies	<div>Yonsei University</div>	Graduate School of International Studies
<div>Korea University</div>	Graduate School of International Studies	<div>Ewha Womans University</div>	Graduate School (일반대학원)
<div>Kyunghee University</div>	Graduate School of Pan-Pacific International Studies	<div>Ewha Womans University</div>	Professional Graduate Schools (전문대학원)
<div>KDI School of Public Policy and Management</div>			

Diversity of Students

■ Educational Background of Students



■ Educational Background of Students



Student Activities

■ International Cultural Festival



The “International Cultural Festival” is one of the biggest annual festivals at Ewha GSIS. It was first organized in 2007 and each year students from over 25 countries take part in the event. It is composed of two sections, cultural exhibitions and cultural performances. You can enjoy the authentic cultures of different countries by visiting exhibition booths within the International Education Building followed by cultural performances, including traditional dancing and singing from different countries.

■ Student Council Activities

**Social Activities**

Ewha GSIS Student Council values humanity, and through social activities, it tries its best to contribute to the world by having fund raising activities such as flea markets, art fairs, etc., in which the collected fund are allocated by a chosen NGO to people who need it such as orphans, people who suffer from disastrous events such as a tsunamis, landslides, earthquakes, etc.



**Future Concern**



**Career Fair**

Events where students can get access to companies and request information needed for future career interests.

**Inter-GSIS**

Events where students can get together with students from other GSIS to exchange information, get to know each other, or simply to widen networking opportunities.

Contact Us : [gsis.sc@ewha.ac.kr](mailto:gsis.sc@ewha.ac.kr)

**NGO NETWORK**



■ Spring and fall regular field trip, Department of Korean Studies

The Department of Korean Studies has regular field trips in the spring and fall. You can see and feel Korean historical sites for yourself with field lectures provided by expert professors in the study of Korean culture. Much will be learned and experienced in this exciting, interactive two day event.

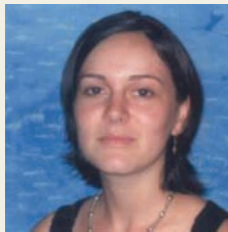


■ Study groups, Department of Korean Studies

Students who are studying Teaching Korean as a Foreign Language attend study groups every semester and vacation periods. Incoming students can have prior learning to approach each major in-depth through the well-organized study program under the professors' guidance. Incoming student can join current students during the vacation period to gain in depth information about the field through this well-organized program.



**Joonhee Kim**  
Master's Program in  
International Studies  
(Major in Development  
Cooperation)



**Morera Montero  
Ivania**  
Master's Program in  
International Studies  
(Major in Diplomacy &  
Security)



**Suyoun Jang**  
Doctoral Program in  
International Studies  
(Major in Development  
Cooperation)

When looking back at my four semesters at Ewha GSIS, it all seems like a well structured journey. My journey started off by meeting new people. I was given a golden opportunity to meet professors who always kept the doors wide open for students to provide sincere consultations not to mention their passionate lectures, and my most valuable hard working and competent colleagues who always strived to achieve their individual goals each semester. Although my shallow background in development cooperation was a heavy burden, through the lectures, collaborations, and exchange with professors and colleagues I was able to manage each semester with gradual accumulation in my understanding and knowledge.

I was always curious to know how the contents learnt at GSIS could be practiced in real life and fortunately I was able to obtain a tangible idea during my six months internship at UNESCO Headquarters in Paris. Although I had to contact the staff members of UNESCO individually for the confirmation of my internship, I had the privilege of receiving financial support from the Ministry of Gender Equality through the 'International Internship for Professional Women' selected annually in September. As I worked at the Culture Sector, it was not directly linked to my major. However, since UNESCO's priority themes include Africa and gender equality, it was possible to gain access to documents related to MDGs, poverty, globalization and other themes discussed during the courses. I was most impressed by the fund provided by UNESCO for developing countries to promote cultural projects that would enhance the development of a country. As important conferences took place during my internship, I had the opportunity to watch and prepare for the General Conference, Executive Board, Youth Forum and Intergovernmental Committee. Furthermore, I was responsible for updating latest news concerning the status of the artists along with researching on the Member States' policy towards artists. Being engaged in this internship helped me visualize a blueprint of linking culture and development which I have always sought for but at the same time too vague. Through the internship I realized that GSIS provides solid foundation to better understand the mandates and activities of international organizations and this enabled me to better relate to the tasks given and also complete my internship with enthusiasm and confidence.

My internship was a great experience but I can say without doubt that it could not have been achieved without my invaluable experience at GSIS. I am still on my journey and I look forward to what lies ahead of me.

I decided to join Ewha Womans University GSIS for several reasons; one of them was because, Ewha offered me the chance to study the major that I was interested alongside a very complete curriculum that not many universities offer as an option for Women's Graduate Schools.

I loved the fact that offered small classes and personalized education. Here there is good support available for students. Also in every class I was not treated as a mere number but as a female graduate student. All the professors at Ewha are very supportive and helped me through academic growing and gave me lots of good advice, which has helped me to make good career choices. I like that communication between the staff and the students is constant and effective, always giving us useful information in relation to useful extracurricular activities. Diverse opportunities such as exchange student program and other international projects allowed all the students to interact with several people from all over the World. I value the chance to make new friends and to enjoy the active social environment at the campus; besides the academic responsibilities collecting memories and special moments are important as well.

I would highly recommend Ewha GSIS for all those women out there who are seeking to become professionals and whose aim is to obtain the best education in the best environment. Ewha's GSIS has Great Human support from the office staff to the student, well-qualified professors and a beautiful campus. For all the women who are actually interested in the field of International relations Ewha Womans University presents a very good option to raise career aspirations. The moment I started my studies at GSIS I knew I was starting to build a successful career. Now I'm really satisfied because Ewha has fulfilled all the expectations that I had when I joined the GSIS.

As I finish my master's degree, I can say I have matured both intellectually and personally from valuable experiences and opportunities at Ewha GSIS. This also enabled me to get admission and start my PhD here. In retrospect, it seems hard to imagine myself being confident and achieving my current career without professors.

I can remember my first day at Ewha GSIS. I was really nervous and even afraid of taking class because I have never taken class in English. In addition, I was a teaching assistant to five foreign professors and this made me feel more worried. But I tried to do my best to be a good student as well as a faithful assistant. Whenever I made a mistake, they were being very nice and patient. They gave me a helpful advice and more chances to make up for it. Through active communication with professors, I became more confident and achieved my current career as a researcher of Institute for Development and Human Security.

Of course, I have gained in-depth knowledge about my major field of study thanks to the excellent interdisciplinary curriculum and environment. I think Ewha GSIS provides the most beneficial and distinguished environment for studying development studies. Every year, around 30-40 students from all around the world, particularly from partner countries, come to study at Ewha GSIS. By taking class and studying together with those friends, I could hear the real voices, see the real situations, and feel the real needs of the world. I believe it is the essence of development study and because of the unique studying environment Ewha GSIS provides, I feel a new strength and passion being added to my heart to learn and contribute more in this field. I am honored to have been given the opportunities to study and hope to have better future because of my experience at Ewha GSIS.



**Sirinot Sirirat**  
Ph.D. Program in Korean Studies  
(Major in Teaching Korean as a  
Foreign Language)



**Sang-ha Noh**  
2008 Graduate of M.A. in  
Korean Studies  
(Major in Korean Culture)



**MinJin Park**  
M. A. Program in Korean Studies  
(Major in Teaching Korean as a  
Foreign Language)

These days increasing numbers of students are interested in Korean due to the "Korean wave." However, there wasn't anything special to deliver to students as a Korean instructor when I was home, since courses were too plain in the university. Instructors always needed textbooks and taught exactly the same things that were written there. I wanted to make something different and special; yet, I couldn't find a way to do it. As time went by, I felt my Korean ability was lacking and I was eager to continue my study. That was when "Korean Studies" caught my attention. I applied and got admission from Ewha EGPP (Ewha Global Partnership Program) majoring in Teaching Korean as a Foreign Language. After completing my master's program, I started my doctoral program by receiving a scholarship from POSCO TJ Park Foundation with the help from professors of the Korean Studies Department.

We are able to learn theory of Korean education and teaching method from 'Teaching Korean as a Foreign Language' major through professors who have sufficient knowledge and experiences in the field. Even more, the department provides a field trip every semester to let students experience Korean culture and history. The school also has good facilities that support comfortable environment to study.

I have become new instructor through this program. I am more confident now than before as being a Korean educator. I'm no longer an instructor who just has some knowledge in Korean, but I'm proud of myself being an instructor who is capable for teaching Korean.

I want to recommend 'Teaching Korean as a Foreign Language' major. I believe that you will gain precious experience through the program. It will never turn your back on. Ewha GSIS is welcoming you to become professional in the field!

Hello. I am Sang-ha NOH currently working at the Cultural and Arts Policy Research Division in the Korea Culture and Tourism Institute. I recollect the time when I was pondering upon entering graduate school three years ago. I simply liked Korean culture and believed that Korean language, architecture, food, painting, music, etc. had its own unique charm. I trusted that if they could only be effectively publicized, they would be competitive in the world. However, I could not give a clear answer as to what competitiveness they have in specific, and that is why I came to enter the Korean Culture major in Ewha Korean Studies Department.

After two years of studying Korean culture, I was able to pinpoint the characteristics of our culture. My pride for the Korean culture intensified with the elimination of the vagueness I previously had over the topic. Also, I was able to perceive the contemporary Korean society, culture, and mentality from a different perspective. The attractiveness of Seoul that was rediscovered in classes and the life of Korean culture that we had witnessed first hand through field excursions will remain as unforgettable assets for the rest of my life.

I am confident that the Korean Studies Department at Ewha is the best place to attain a thorough knowledge on Korean culture.

I encountered a whole new world when I entered Ewha GSIS in 2007. The experience that I had became important assets whenever I meet and communicate with students who want to learn Korean.

I am currently teaching Korean at Yonsei Language Institute after receiving a master's degree from Ewha GSIS in February, 2009. I really thank professors, seniors and juniors for sharing great knowledge and experiences.

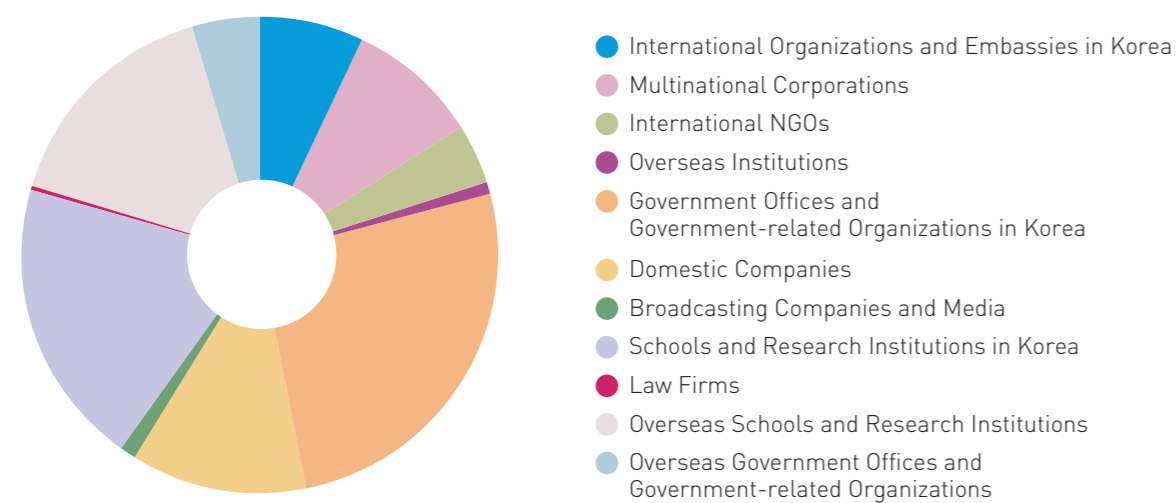
I took a Korean culture class along with my major which was Teaching Korean as a Foreign Language. I understood the importance on the fundamental basis of "Language and Culture." When teaching language, an important thing is not only related to the grammatical theory but also related to its culture. Without the culture, the language is just an empty shell. The language is a method which delivers culture, emotion, and feelings along with information. Having relationship with students from International Studies Department, I had chance to set my identity as a Korean educator. It nurtured me to gain a wide range of prospects and view.

The domestic and international internship program offered experience in the field by using skills which were gained from the class. The experience was helpful when I was applying and preparing for the future career. Teaching the Korean language to Mongolian students, communicating and sharing thoughts and ideas gave an opportunity to think how Korea would reflect in their eyes. The internship that I had in Jiangsu, China during the break, gave me abroad aspects to understand Korean education. The passion and eagerness that the students showed toward Korea made me pleased for being a Korean lecturer and also proud of being Korean. I felt great responsibility lying on my shoulder for being Korean and Korean instructor throughout the experience.

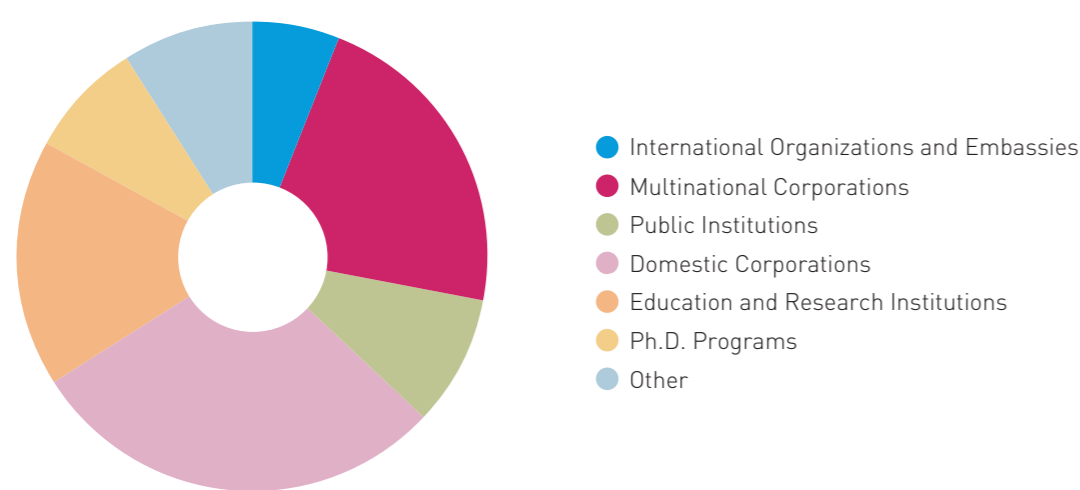
The experience for last two years in Korean Studies, sufficiently led me to work as a Korean instructor. I learned not only knowledge of Korean education but also the depth of Korean culture through the Korean Culture program. It gave an open-wide view of Korean Studies. The internship program itself became a huge asset in my life. I believe that Ewha GSIS made it possible for me to become a warm hearted Korean instructor. I hope prospective students will get the experience and grab a chance to learn at Ewha GSIS.

Thank You!

Internships (2007-2010)



Professional Careers of Graduates (1999-2009)



Global Career Management Center (GCMC)

The Global Career Management Center (GCMC) provides a wide range of career development, career education, and practical experiences to students of the Ewha Womans University Graduate School of International Studies (GSIS). GCMC is dedicated to connecting employers with qualified graduate students and alumni for full- and part-time employment and internships. Valuable development resources and a database of career opportunities are available online and in the GCMC office.

Graduate School of International Studies



GSIS Moments



Graduate School of International Studies





Graduate School of International Studies

**Ewha Campus Complex (ECC)**

Ewha Campus Complex (ECC), newly opened in April 2008 with the futuristic design, is the largest multi-purpose educational underground campus in Korea. ECC has a total floor area of 66,116m<sup>2</sup> and consists of six floors. The upper four floors have various facilities for students: 24-hour open study rooms, multimedia lecture rooms, seminar rooms, a multi-purpose exhibition hall, a global zone, a student service center, a cinema, a concert hall, and a fitness center. A parking lot with a capacity of 750 vehicles is also available on the lower floors of the campus, and Ewha Welcome Plaza provides overall information on ECC and Ewha Womans University to visitors.



**Office of Global Affairs**

Ewha's Office of Global Affairs (OGA) renders services and shows leadership in Ewha's globalized educational system. The mission of the OGA is to foster the global dimension of the University by promoting, supporting, and developing a wide range of global and inter-cultural mobility initiatives for the members and partners of the Ewha community. OGA recently open the Ewha Global Center to provide one-stop service for international students and faculty members.

<http://oga.ewha.ac.kr>

**Centennial Library**

Built in 1986 for the school's centennial anniversary, the six-story facility contains about 1.5 million books, 10,000 periodicals, 26,000 electronic journals and 110,000 units of microfiche. With a seating capacity of over 5,000 persons, it is spacious enough to accommodate a quarter of Ewha's entire class at one time. The Ewha Library Information System (ELIS) provides easy computerized assistance to students in identifying and locating resources.

<http://lib.ewha.ac.kr>



**Ewha Graduate Student Dormitory**

Ewha Graduate Student Dormitory was established in September 2006, with high-tech facilities. On 16,597m<sup>2</sup> gross area, the dormitory consists of two 9-story buildings (7-story buildings with 2-story basement). There are 53 single rooms and 78 twin rooms for students, and 22 rooms for professors or researchers. Each room is furnished with a bathroom, bed, desk, closet, bookshelf, phone, and a small refrigerator. The dormitory also has other facilities such as life-fitness rooms, PC rooms (online video chatting available), seminar rooms, reading rooms, prayer room, lounge, convenience store, etc.,

<http://dmtrygr.ewha.ac.kr>



**Ewha Language Center**

The Ewha Language Center is open to anyone interested in learning foreign languages and culture. Language programs vary from Korean, English, Japanese, and Chinese to French. They primarily focus on speaking and listening to enhance communication skills in everyday life. The programs offer student-oriented education, tailored to specific needs and circumstances of the students.

<http://elc.ewha.ac.kr>

**Sports Facilities**

On Ewha campus, there are various sports facilities that students can use for free or for a low fee, such as an indoor swimming pool, a fitness center that offers yoga, jazz dance and sport dance classes, tennis courts, squash courts, a gymnasium and an indoor driving range.



Graduate School of International Studies

01. Main Gate

02. Admission Hall

03. Physical Education Building A(Thomas Hall)

04. Physical Education Building B(Gibson Hall)

05. Physical Education Building C

06. Arts & Design Building A

07. Arts & Design Building B

08. Arts & Design Building C

09. Natural History Museum

10. English Practice House

11. Longview House

12. Music Building

13. Ewha Centennial Library

14. Helen Hall(Nursing Science)

15. Wichita House(Preisidentt's Residence)

16. Law Building

17. Ewha Archives

18. Ah-Ryoung-Dang(House Management House)

19. Engineering Buiding(Asan Hall)

20. New Engineering Buiding

21. Ewha-Kumnan High School

22. Education Building A

23. Education Building B

24. North Gate

25. Science Building A

26. Science Building B

27. Science Building C

28. Jinsunmikwan

29. Ewha-POSCO Building(Social Sciences)

30. Humanieies Building B

31. Humanities Building A

32. Student Union
33. Pharmaceutical Science Building A (Appenzeller Hall)

34. Pharmaceutical Science Building B

35. Statue of Dr. Helen Kim

36. Pfeiffer Hall (Main Hall)

37. Case Hall(Graduate School Building)

38. Emerson Chapel

39. Clara Hall(Graduate School Buiding II )

40. Welch-Ryang Auditorium

41. Back Gate

42. Ewha-Kumnan Junior High School

43. Ewha-Samsung Education Culture Building

44. Ewha-Shinsegae Building(Business)

45. Ewha-SK Telecom Center

46. Human Ecology Building (Morris Hall) Alumnae Building

47. Ewha Kindergarten

48. Ewha Elementary School

49. Upper Room

50. West Gate

51. Centennial Museum

52. International Education Building
53. Ewha Womans University Church

54. Ewha Athletics Track

55. Graduate Student Dormitory A

56. Graduate Student Dormitory B

57. Ewha-Samsung International House

58. Ewha-ALPS Children's Center

59. Ewha Campus Complex

60. Community Welfare Center

61. Hanwoori Hall

62. Tennis Court

63. Greenhouse

64. North A-Hyun Gate

65. Herb Garden

66. Ewha Haktang(The Ewha Foundation)

Office of Academic and Student Affairs  
Graduate School of International Studies  
Ewha Womans University

52 Ewhayeodae-gil, Seodaemun-gu, Seoul, 120-750 Korea  
Tel: +82-2-3277-3652, 3956 Fax: +82-2-365-0942  
E-Mail: gsis97@ewha.ac.kr Website: <http://gsis.ewha.ac.kr>

